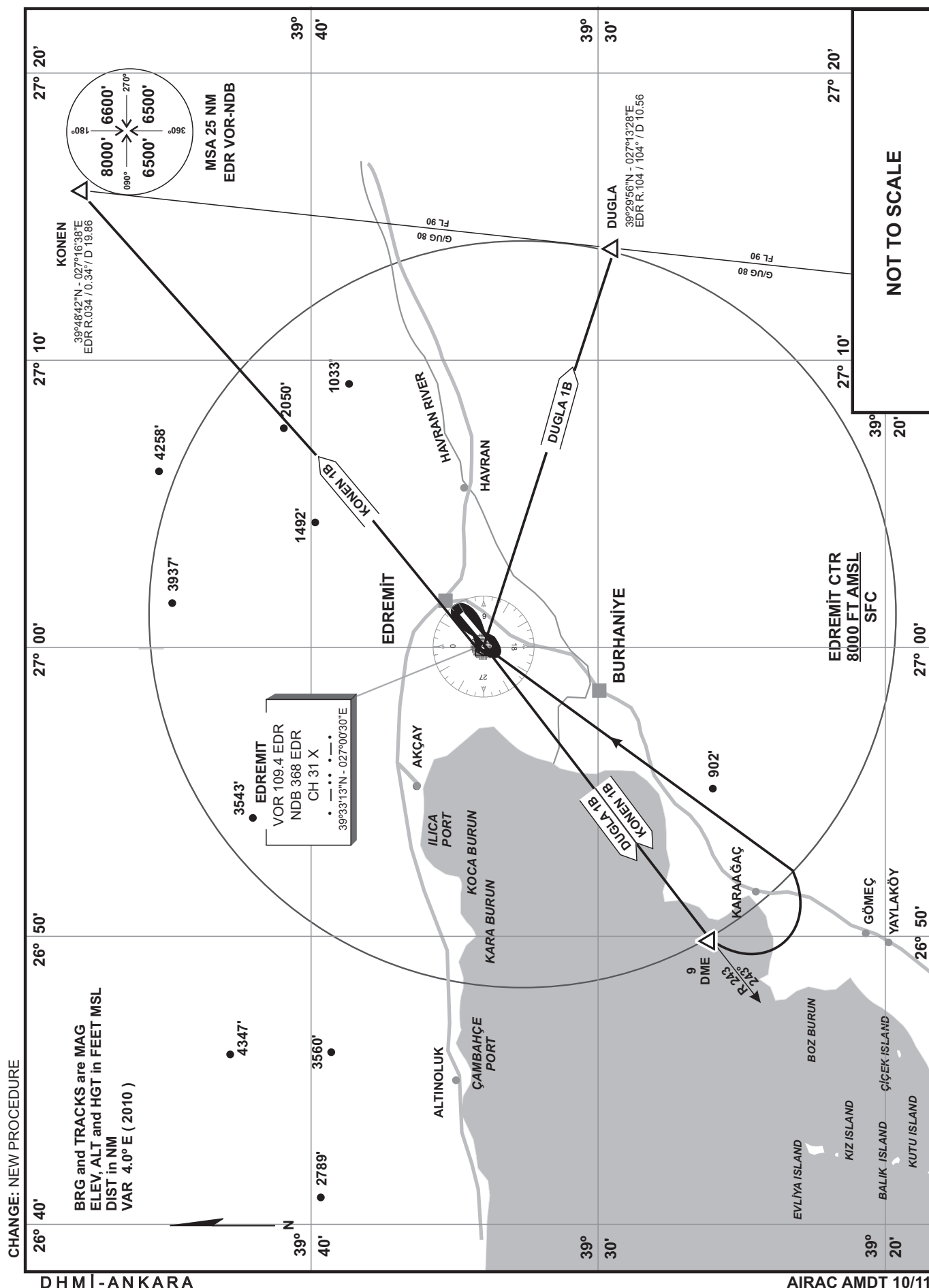


TRANSITION ALTITUDE
10000 FT

BALIKESIR/KÖRFEZ
RWY 23

**BALIKESİR/KÖRFEZ AIRPORT STANDARD INSTRUMENT DEPARTURE ROUTES FOR RWY 23
(BASED ON EDR VOR/DME, NDB/DME)**

**DUGLA 1B
(DUGLA ONE BRAVO)**

: Climb on EDR R-243 (243° of EDR NDB) until 9 DME and turn left climbing to proceed EDR VOR/DME at or above 4000 FT, then right turn to intercept EDR R-104 (104° of EDR NDB) and proceed DUGLA to join AWY G/UG80

Note: Maximum IAS 204 KT until inbound to EDR VOR/NDB

**KONEN 1B
(KONEN ONE BRAVO)**

: Climb on EDR R-243 (243° of EDR NDB) until 9 DME and turn left climbing to proceed EDR VOR/DME at or above 4000 FT, then intercept EDR R-034 (034° of EDR NDB) and proceed KONEN to join AWY G/UG80

Note: Maximum IAS 204 KT until inbound to EDR VOR/NDB